
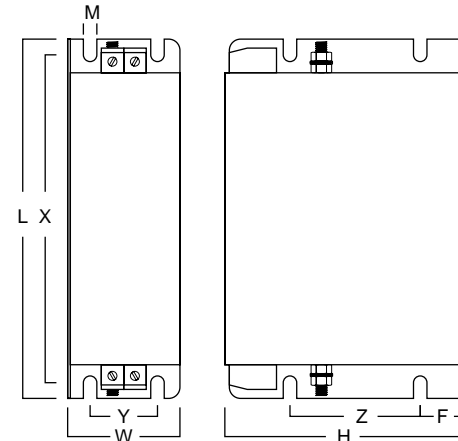
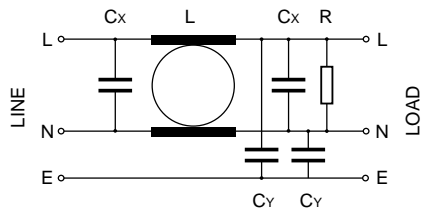


MHU Series Single Phase RFI Filters 240-250Vac, 48-62Hz

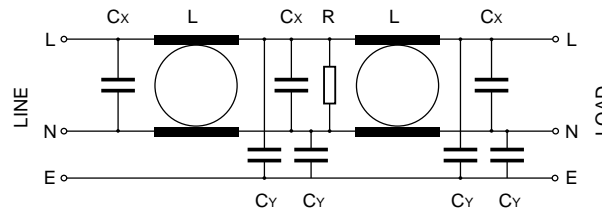
RFI filters for industrial applications up to 52A.
 All filters are constructed with self-healing interference suppression capacitors approved to EN132400 & UL. Input and output connections by shrouded type terminals.
 Models up to 35A are UL1283 approved 
 All models carry the CE mark.



Circuit Schematic
 10, 16A




25, 35, 52A

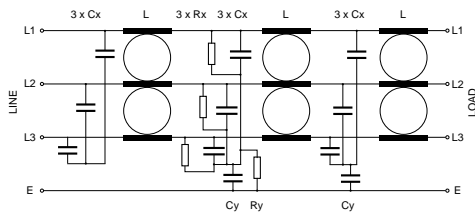


| Filter part no. | Rated Current @ 40°C (A) | Leakage Current @ 250Vac 50Hz (mA) | Terminals (mm ²) | Earth Stud | Case Dimensions (mm) | | | Mounting (mm) | | | | | Wt (kg) |
|-----------------|--------------------------|------------------------------------|------------------------------|------------|----------------------|----|-----|---------------|----|----|----|----|---------|
| | | | | | L | W | H | X | Y | Z | F | M | |
| RF 1010-MHU | 10 | 7.0 | 0-6 | M5 | 160 | 50 | 109 | 146 | 30 | 50 | 30 | M5 | 0.8 |
| RF 1016-MHU | 16 | 7.0 | 0-6 | M5 | 160 | 50 | 109 | 146 | 30 | 50 | 30 | M5 | 0.9 |
| RF 1025-MHU | 25 | 3.5 | 0-10 | M5 | 240 | 60 | 122 | 225 | 40 | 50 | 33 | M5 | 1.4 |
| RF 1035-MHU | 35 | 3.5 | 0-10 | M5 | 240 | 60 | 122 | 225 | 40 | 50 | 33 | M5 | 1.7 |
| RF 1052-MHU | 52 | 3.5 | 0-16 | M6 | 290 | 60 | 152 | 272 | 40 | 70 | 33 | M6 | 3.0 |

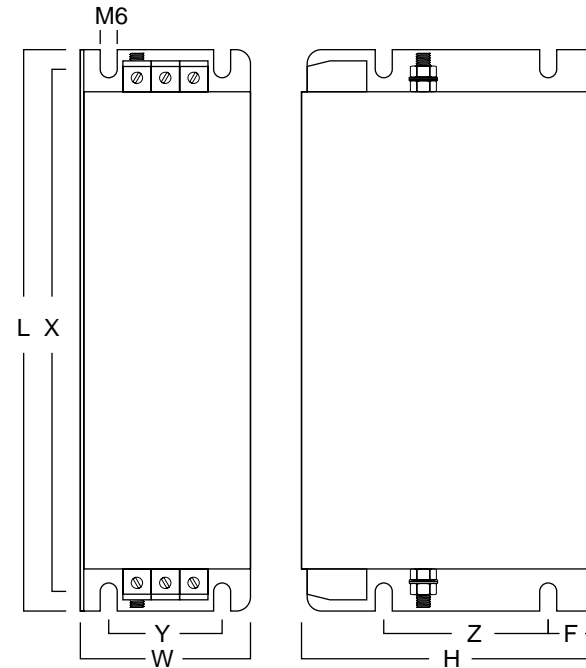
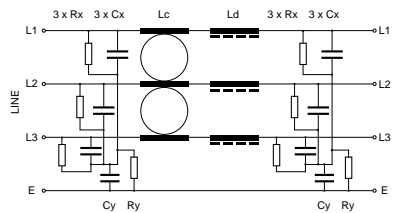
MHU Series Three Phase RFI Filters 380-480Vac, 48-62Hz

RFI filters for industrial applications up to 180A.
 All filters are constructed with self-healing interference suppression capacitors approved to EN132400 & UL. Input and output connections by shrouded type terminals.
 All units are UL1283 approved  and carry the CE mark.

Circuit Schematic
6-50A



70-180A



| Filter part no. | Rated Current @ 40°C (A) | Leakage Current @ 440Vac 50Hz | | Terminals (mm ²) | Earth Stud | Case Dimensions (mm) | | | Mounting (mm) | | | | Wt (kg) |
|-----------------|--------------------------|-------------------------------|-----|------------------------------|------------|----------------------|-----|-----|---------------|----|-----|----|---------|
| | | nom (mA) | max | | | L | W | H | X | Y | Z | F | |
| RF 3006-MHU | 6 | 0.2 | 14 | 0-6 | M5 | 255 | 50 | 126 | 240 | 25 | 80 | 20 | 1.4 |
| RF 3010-MHU | 10 | 0.2 | 14 | 0-6 | M5 | 255 | 50 | 126 | 240 | 25 | 80 | 20 | 1.4 |
| RF 3016-MHU | 16 | 0.2 | 14 | 0-10 | M5 | 305 | 60 | 160 | 290 | 30 | 100 | 20 | 2.2 |
| RF 3025-MHU | 25 | 0.2 | 14 | 0-10 | M5 | 305 | 60 | 160 | 290 | 30 | 100 | 20 | 2.4 |
| RF 3040-MHU | 40 | 0.3 | 40 | 0-25 | M6 | 329 | 70 | 190 | 314 | 45 | 100 | 30 | 3.2 |
| RF 3050-MHU | 50 | 0.3 | 40 | 0-25 | M6 | 329 | 70 | 190 | 314 | 45 | 100 | 30 | 3.4 |
| RF 3070-MHU | 68 | 0.7 | 70 | 6-35 | M6 | 329 | 80 | 220 | 314 | 55 | 120 | 30 | 5.3 |
| RF 3100-MHU | 100 | 0.7 | 70 | 16-70 | M8 | 379 | 90 | 220 | 364 | 65 | 110 | 30 | 5.6 |
| RF 3130-MHU | 130 | 1.3 | 130 | 25-120 | M10 | 429 | 110 | 240 | 414 | 80 | 90 | 30 | 7.1 |
| RF 3180-MHU | 180 | 1.3 | 130 | 25-120 | M10 | 429 | 110 | 240 | 414 | 80 | 90 | 30 | 7.5 |

RASMI ELECTRONICS LTD
 Tel: +44 (0) 1207 291300

Morrison Road, Annfield Plain, Stanley Co. Durham DH9 7RX
 Fax: +44 (0) 1207 291304 e-mail: sales@rasmi.com



MHU Series Three Phase and Neutral RFI Filters

380-480Vac, 48-62Hz

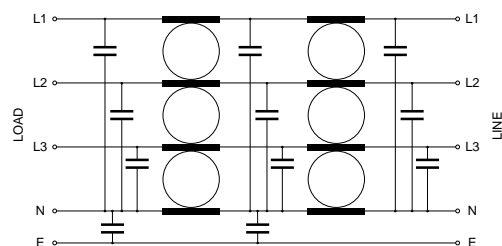
RFI filters for industrial applications up to 180A.

All filters are constructed with self-healing X and Y interference suppression capacitors approved to EN132400 & UL1283. Input and output connections by shrouded terminals.

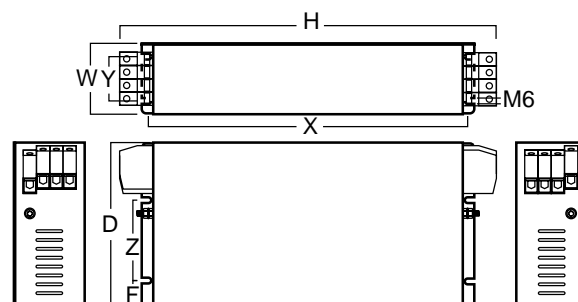
All units are manufactured to EN133200 specifications and carry the CE mark.



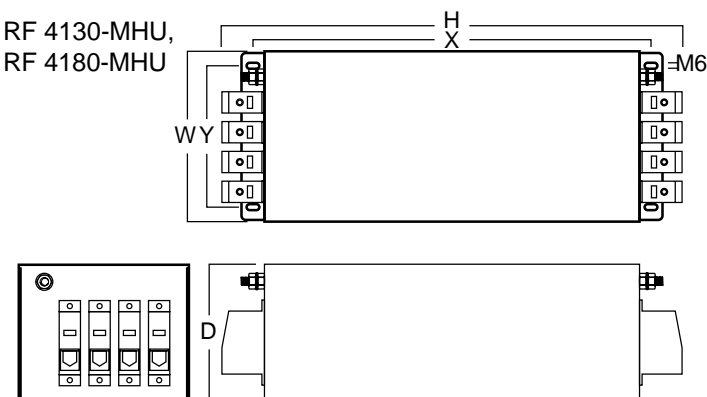
Circuit Schematic



RF 4016-MHU to
RF 4100-MHU




RF 4130-MHU,
RF 4180-MHU

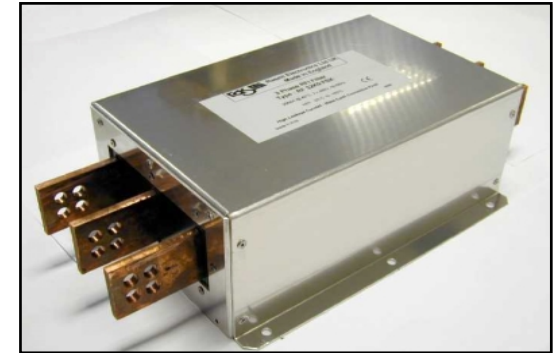


| Filter part no. | Rated Current @ 40°C (A) | Leakage Current @ 440Vac 50Hz nom (mA) max | | Power Loss (W) | Shrouded Terminals (mm ²) | Earth Stud | Case Dimensions | | | Mounting (mm) | | | | Weight (kg) |
|-----------------|-----------------------------|--|-----|----------------------|---|---------------|-----------------|-----|--------|---------------|-----|-----|----|----------------|
| | | | | | | | H | W | D (mm) | X | Y | Z | F | |
| RF 4016-MHU | 16 | 0.05 | 14 | 12 | 0-10 | M5 | 308 | 60 | 142 | 290 | 30 | 60 | 20 | 1.8 |
| RF 4030-MHU | 30 | 0.05 | 28 | 26 | 0-10 | M5 | 308 | 70 | 172 | 290 | 40 | 90 | 20 | 3.0 |
| RF 4042-MHU | 42 | 0.05 | 28 | 35 | 0-10 | M5 | 308 | 70 | 172 | 290 | 40 | 90 | 20 | 3.2 |
| RF 4055-MHU | 55 | 0.05 | 28 | 46 | 0-25 | M6 | 384 | 80 | 172 | 330 | 50 | 90 | 20 | 3.9 |
| RF 4075-MHU | 75 | 0.05 | 40 | 34 | 6-35 | M6 | 427 | 80 | 185 | 363 | 50 | 100 | 20 | 5.0 |
| RF 4100-MHU | 100 | 0.05 | 40 | 38 | 16-70 | M8 | 436 | 90 | 220 | 363 | 65 | 110 | 30 | 6.8 |
| RF 4130-MHU | 130 | 0.05 | 130 | 39 | 25-120 | M10 | 542 | 200 | 160 | 468 | 166 | | | 11 |
| RF 4180-MHU | 180 | 0.05 | 130 | 42 | 25-120 | M10 | 542 | 200 | 160 | 468 | 166 | | | 13 |

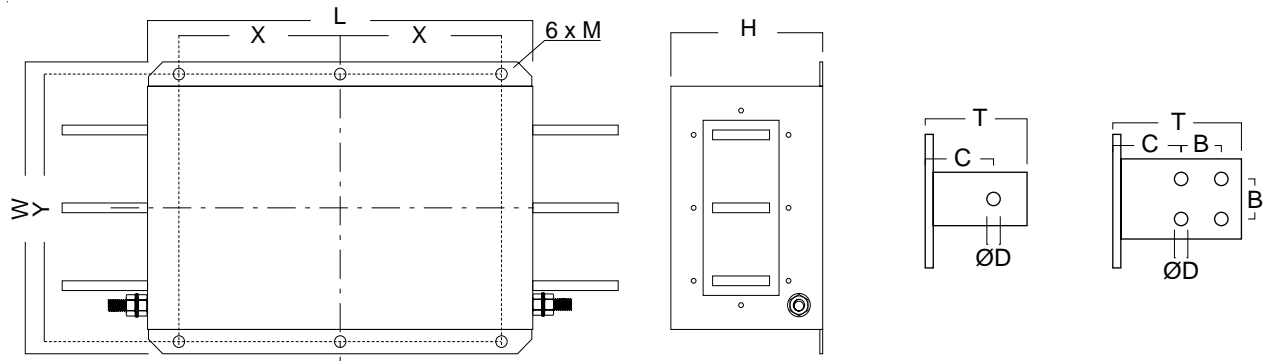
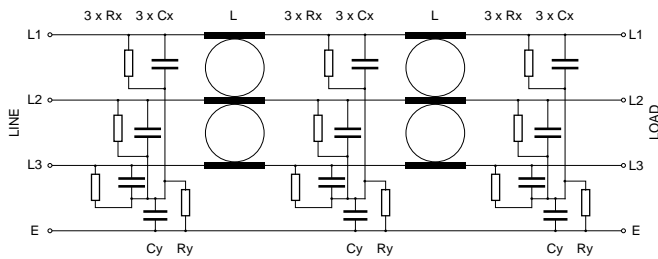
MHU Series Three Phase High Current RFI Filters

380-480Vac, 48-62Hz

RFI filters for industrial applications up to 2500A.
All filters are constructed with self-healing interference suppression capacitors approved to EN132400 & UL.
Input and output connections by busbars.
Units to 800A are UL1283 approved .
All units are manufactured to EN133200 specifications and carry the CE mark.



Circuit Schematic



| Filter part no. | Rated Current | Leakage Current @ 440Vac 50Hz | | Busbar (mm) | Earth Stud | Connection Dimensions (mm) | | | | Case Dimensions L x W x H (mm) | Mounting X x Y x M (mm) | Weight (kg) |
|-----------------|---------------|-------------------------------|-----|-------------|------------|----------------------------|----|----|----|--------------------------------|-------------------------|-------------|
| | | nom (mA) | max | | | T | C | B | D | | | |
| RF 3250-MHU | 250A @ 40°C | 10 | 500 | 25x5 | M12 | 43 | 28 | - | 11 | 300 x 260 x 135 | 120 x 235 x M10 | 13.0 |
| RF 3320-MHU | 320A @ 40°C | 10 | 500 | 25x6 | M12 | 43 | 28 | - | 11 | 300 x 260 x 135 | 120 x 235 x M10 | 13.2 |
| RF 3400-MHU | 400A @ 40°C | 10 | 500 | 25x6 | M12 | 43 | 28 | - | 11 | 300 x 260 x 135 | 120 x 235 x M10 | 13.2 |
| RF 3600-MHU | 600A @ 25°C | 10 | 500 | 30x8 | M12 | 43 | 28 | - | 11 | 300 x 260 x 135 | 120 x 235 x M10 | 13.6 |
| RF 3800-MHU | 800A @ 25°C | 10 | 500 | 40x8 | M12 | 53 | 33 | - | 14 | 350 x 280 x 170 | 145 x 255 x M10 | 23.7 |
| RF 31k0-MHU | 1000A | 10 | 500 | 40x10 | M12 | 53 | 33 | - | 14 | 350 x 280 x 170 | 145 x 255 x M10 | 24 |
| RF 31k6-MHU | 1600A | 2 | 200 | 60x10 | M12 | 93 | 50 | 26 | 14 | 400 x 300 x 170 | 170 x 275 x M10 | 34 |
| RF 32k0-MHU | 2000A | 2 | 200 | 75x10 | M16 | 98 | 43 | 35 | 14 | 600 x 370 x 170 | 250 x 330 x M12 | 65 |
| RF 32k5-MHU | 2500A | 2 | 200 | 76x16 | M16 | 98 | 43 | 35 | 14 | 600 x 370 x 170 | 250 x 330 x M12 | 75 |

UNDER DEVELOPMENT

RASMI ELECTRONICS LTD
Tel: +44 (0) 1207 291300

Morrison Road, Annfield Plain, Stanley Co. Durham DH9 7RX
Fax: +44 (0) 1207 291304 e-mail: sales@rasmi.com

 rev.0.6
RASMI Electronics Ltd